



Kursanalys - KTH¹

Formulär för kursansvarig.

Kursanalysen utförs under kursens gång.

Nomenklatur: F – föreläsning, Ö – övning, R – räknestuga, L – laboration, S – seminarium)

KURSDATA Obligatorisk del ²

Kursens namn

Global Navigation Satellite Systems

Kursnummer

AH2923

Kurspoäng och poäng fördelat på exam-former

När kursen genomfördes

Kursansvarig och övriga lärare

Undervisningstimmar, fördelat på F, Ö, R, L, S

Antal registrerade studenter 19

Prestationsgrad efter 1:a examenstillfället, i % 54

Examinationsgrad efter 1:a examenstillfället, i % 58

MÅL

Ange övergripande målen för kursen

Ange hur kursen är utformad för att uppfylla målen

Eventuellt deltagande i länkmöte före kursstart

Synpunkter från detta

Kursens pedagogiska utveckling I

Beskriv de förändringar som gjorts sedan förra kursomgången. (Berätta även för studenterna vid kursstart)

Kontakt med studenterna under kursens gång

Studenter i årets kurs-nämnd:

Namn

E-post (lämnas blank vid webbpublicering)

¹ Instruktioner till kursanalysformulär sist i dokumentet

² Rektors beslut: <http://www.kth.se/info/kth-handboken/II/12/1.html>

Resultat av formativ mittkursenkät

Resultat av kursmöten

Kontakt med övriga lärare under kursens gång

Kommentarer

Kursenkät; teknologernas synpunkter ³ Obligatorisk del

Att komma ihåg:

- 1) Uppmana, mha kursnämnden, till ifyllande av kursenkät i anslutning till / just efter slutexaminationen
 - 2) Delge kursnämnden enkäten
 - 3) Publicera enkäten under en kortare tid
-

Period, då enkäten var aktiv 2014-05-26 till 2014-06-05

Frågor, som adderades till standardfrågorna

Svarsfrekvens 35%

Förändringar sedan förra genomförandet

Helhetsintryck

Relevanta webb-länkar

Kursansvarigs tolkning av enkät

Positiva synpunkter

-It is good to have computations in the lab-part of the course, and focus more on theory and general knowledge in the lectures.
-Labs as they really help me to better understand the lectures/course literature.
-Yes
-The labs were good, they gave a better understanding of the different topics in the course.
-Loved this course, Thank you. The teacher was devoted to answer all our questions even after class hours. The Labs are interesting and fun and help the understanding of the course.

Negativa synpunkter

-It would be more fun with better interactivity during the lectures. The class was sufficiently small for that to be possible and give a better learning environment.
-The order of topics treated in the lectures was a bit inconsistent. Hence for someone with no background knowledge in GNSS, was hard to understand the topics at the start, as some elements required for comprehension were treated later.
-Number of reports that are all due at once. The last part of the class, we have about 3 lab reports all due on the same day
-The peer review process felt too extensive.
-Lab 3 was poorly executed. We didn't had a clue about the measurement instruments and it was more or less "press this button and then this one".

Var kursen relevant i förhållande till kursmålen?

Syn på förkunskaperna

³ Rektors beslut: <http://www.kth.se/info/kth-handboken/II/12/1.html>

Syn på undervisningsformen

Syn på kurslitt/kursmaterial

Syn på examinationen

**Speciellt intressanta
kommentarer**

Synpunkter från övriga lärare efter avslutad kurs

Vad fungerade bra

Vad fungerade mindre bra

Resultat av kursnämndsmöte efter examination

Studenternas sammanfattn.

Förslag till förändringar

Länk till kursnämndsprot.

Kursansvarigs sammanfattande berättelse

Helhetsintryck

Positiva synpunkter

Negativa synpunkter

Syn på förkunskaperna

Syn på undervisningsformen

Syn på kurslitt/kursmaterial

Syn på examinationen

Kursens pedagogiska utveckling II Obligatorisk del ⁴

**Hur förändringarna till denna
kursomgång fungerade**

**Förändringar som bör göras
inför nästa kursomgång**

Övrigt

Kommentarer

⁴ Rektors beslut: <http://www.kth.se/info/kth-handboken/II/12/1.html>

Instruktioner till kursanalysformulär

- 1) Kursanalysformuläret fylls i interaktivt; fälten expanderar automatiskt.
- 2) Fyll i fälten inom en månad efter kursens slut. (Viktigt krav från KTH!)
Skicka sedan till studierektor (som vidarebefordrar till prefekt och programansvarig).
- 3) Försök att ge så kompletta uppgifter som möjligt.
Tänk på att kursanalysen är ett hjälpmedel inte bara för teknologerna, utan även för Dig som lärare.
- 4) Med ”prestationsgrad” avses antalet presterade poäng hittills på kursen (inlämningsuppgifter, projektuppgifter, laborationer etc.) dividerat med antalet möjliga poäng för de registrerade studenterna. Med ”examinationsgrad” avses antalet studenter av de registrerade, som klarat samtliga kurskrav.
Kurssekreteraren hjälper gärna till här.
- 5) Kontakten med studenterna:
 - Etablera kursnämnd under kursens första vecka (minst två studerande, gärna genusbalanserad).
 - Lämplig bonus till kursnämndsdeltagarna är fri kurslitteratur.
 - Om kursnämnd ej kan etableras, skall sektionens studienämndsordförande (SNO) kontaktas genast (se www.ths.kth.se/utbildning/utbildningsradet.html för kontaktuppgifter).
 - Kursnämnden skall sammanträda under kursens gång, exempelvis i halvtid. Har mittkursutvärdering genomförts, skall den diskuteras då.
 - Kursnämnden skall även ha ett möte efter det att studenterna har besvarat kursutvärderingen och kursnämndens studenter fått tillgång till resultaten. Undantaget är kurser i period fyra, där mötet bör ske direkt efter examinationen är avslutad för att analysen skall vara klar innan sommaren.
 - Under det avslutande kursnämndsmötet bör studenterna föra protokoll. Detta protokoll skall kursansvarig få senast en vecka efter mötet.
 - Det är kursansvarigs ansvar att kalla till kursnämndsmöten.

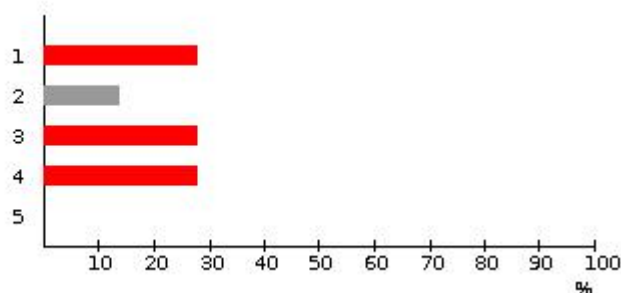
Slutligen, tänk på:

- det är viktigt att kursanalysen tydligt *visar utvecklingen av kursens kvalitet* från ett läsår till nästa.
- möjligheten att lägga ut kursanalysen på kurshemsidan.
- spara kursanalysen till förberedelsearbetet inför nästa kursomgång.

Survey results

Survey: Course evaluation
Status: open
Date: 2015-03-10 08:34:08
Group: Participants (AH2923 Global Navigation Satellite Systems)
Answered by: 7(20) (35%)

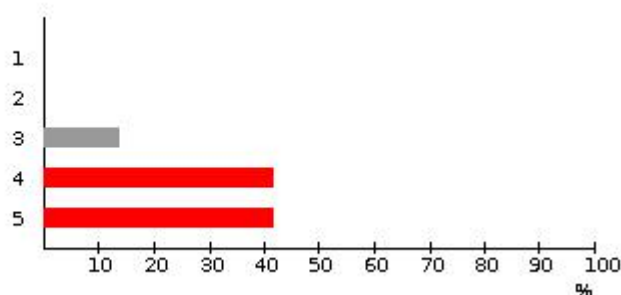
How is your background knowledge related to this course? Scale: 1 = low ... 5 = extensive



answer choice	1	2	3	4	5
distribution	28,6%	14,3%	28,6%	28,6%	0%
number	(2)	(1)	(2)	(2)	(0)

Average (for numeric-answers): 2,57
 7 has answered of 20 (35%)
 Maximum number of choices: 1

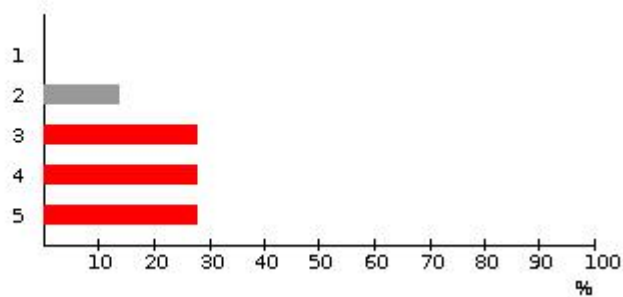
What do you think of the content of the lectures? Scale: 1 = very bad, 2 = bad, 3 = acceptable, 4 = good, 5 = very good



answer choice	1	2	3	4	5
distribution	0%	0%	14,3%	42,9%	42,9%
number	(0)	(0)	(1)	(3)	(3)

Average (for numeric-answers): 4,29
 7 has answered of 20 (35%)
 Maximum number of choices: 1

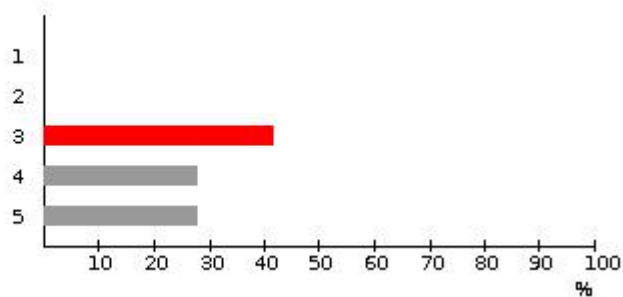
Did the lecturers succeed in transferring new knowledge to the students? Scale: 1 = not at all ... 5 = very much



answer choice	1	2	3	4	5
distribution	0%	14,3%	28,6%	28,6%	28,6%
number	(0)	(1)	(2)	(2)	(2)

Average (for numeric-answers): 3,71
 7 has answered of 20 (35%)
 Maximum number of choices: 1

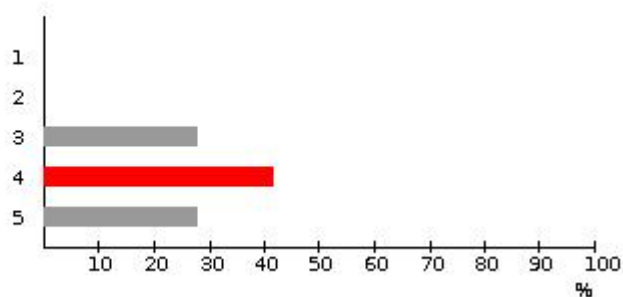
Did the lectures increase your interests in the subjects? *Scale: 1 = not at all ... 5 = very much*



answer choice	1	2	3	4	5
distribution	0%	0%	42,9%	28,6%	28,6%
number	(0)	(0)	(3)	(2)	(2)

Average (for numeric-answers): 3,86
 7 has answered of 20 (35%)
 Maximum number of choices: 1

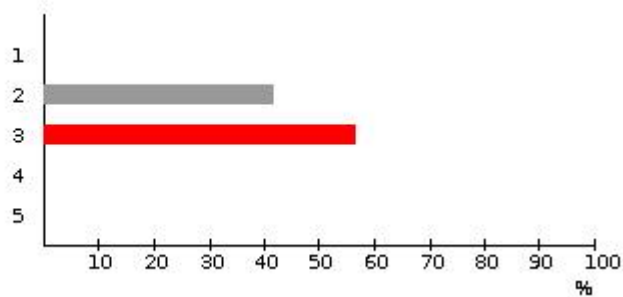
How is the content of the exercises? *Scale: 1 = very bad, 2 = bad, 3 = acceptable, 4 = good, 5 = very good*



answer choice	1	2	3	4	5
distribution	0%	0%	28,6%	42,9%	28,6%
number	(0)	(0)	(2)	(3)	(2)

Average (for numeric-answers): 4
 7 has answered of 20 (35%)
 Maximum number of choices: 1

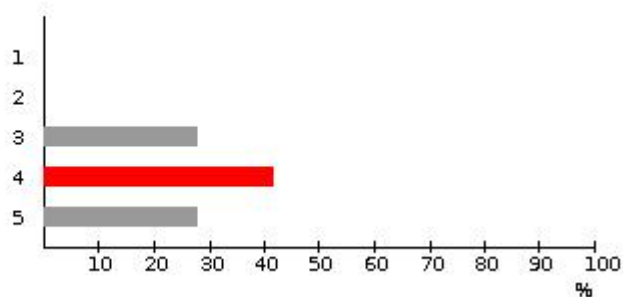
Are exercise problems too difficult? *Scale: 1 = very easy ... 5 = very difficult*



answer choice	1	2	3	4	5
distribution	0%	42,9%	57,1%	0%	0%
number	(0)	(3)	(4)	(0)	(0)

Average (for numeric-answers): 2,57
 7 has answered of 20 (35%)
 Maximum number of choices: 1

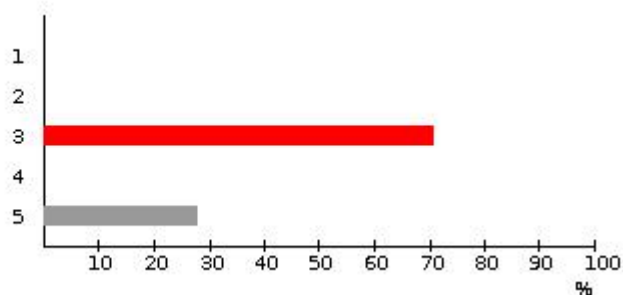
Is the lab facility satisfactory for performing the exercises? Scale: 1 = very bad, 2 = bad, 3 = acceptable, 4 = good, 5 = very good



answer choice	1	2	3	4	5
distribution	0%	0%	28,6%	42,9%	28,6%
number	(0)	(0)	(2)	(3)	(2)

Average (for numeric-answers): 4
 7 has answered of 20 (35%)
 Maximum number of choices: 1

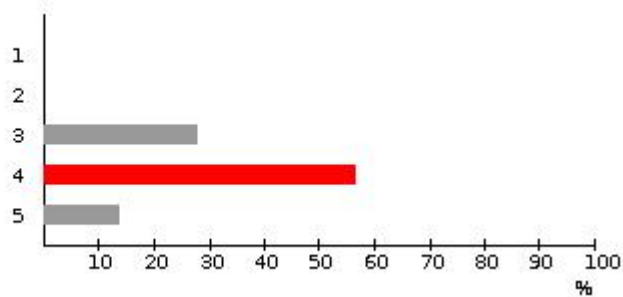
Is the course literature sufficient? Scale: 1 = not att all ... 5 = very much



answer choice	1	2	3	4	5
distribution	0%	0%	71,4%	0%	28,6%
number	(0)	(0)	(5)	(0)	(2)

Average (for numeric-answers): 3,57
 7 has answered of 20 (35%)
 Maximum number of choices: 1

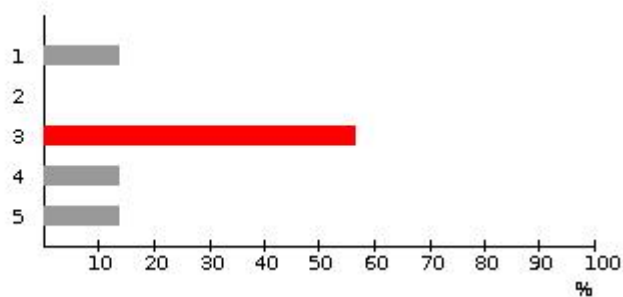
Is the literature adapted to your knowledge level? Scale: 1 = not att all ... 5 = very much



answer choice	1	2	3	4	5
distribution	0%	0%	28,6%	57,1%	14,3%
number	(0)	(0)	(2)	(4)	(1)

Average (for numeric-answers): 3,86
 7 has answered of 20 (35%)
 Maximum number of choices: 1

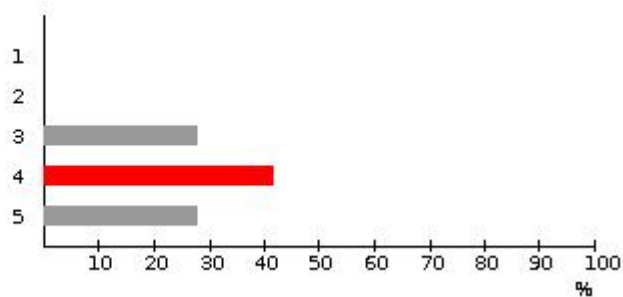
Is the literature easy to understand? Scale: 1 = not att all ... 5 = very much



answer choice	1	2	3	4	5
distribution	14,3%	0%	57,1%	14,3%	14,3%
number	(1)	(0)	(4)	(1)	(1)

Average (for numeric-answers): 3,14
 7 has answered of 20 (35%)
 Maximum number of choices: 1

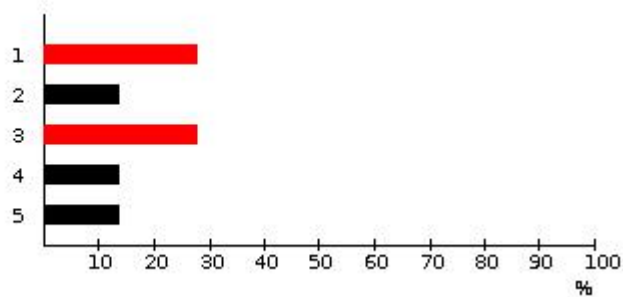
How are the written instructions for exercise problems/lab work? Scale: 1 = very bad, 2 = bad, 3 = acceptable, 4 = good, 5 = very good



answer choice	1	2	3	4	5
distribution	0%	0%	28,6%	42,9%	28,6%
number	(0)	(0)	(2)	(3)	(2)

Average (for numeric-answers): 4
 7 has answered of 20 (35%)
 Maximum number of choices: 1

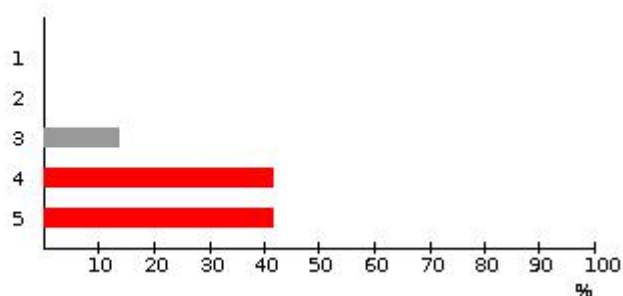
Are the examination questions easy to understand? Scale: 1=very easy ... 5=very difficult



answer choice	1	2	3	4	5
distribution	28,6%	14,3%	28,6%	14,3%	14,3%
number	(2)	(1)	(2)	(1)	(1)

Average (for numeric-answers): 2,71
 7 has answered of 20 (35%)
 Maximum number of choices: 1

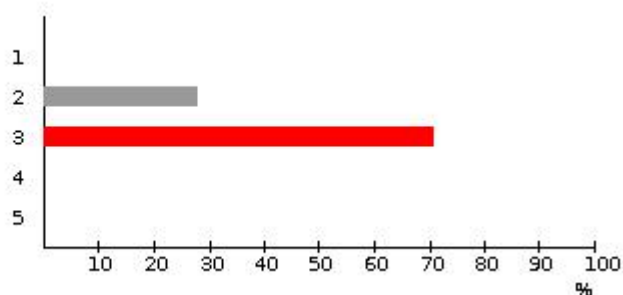
Did the examination questions reflect the content of the course? Scale: 1 = not at all ... 5 = very much



answer choice	1	2	3	4	5
distribution	0%	0%	14,3%	42,9%	42,9%
number	(0)	(0)	(1)	(3)	(3)

Average (for numeric-answers): 4,29
 7 has answered of 20 (35%)
 Maximum number of choices: 1

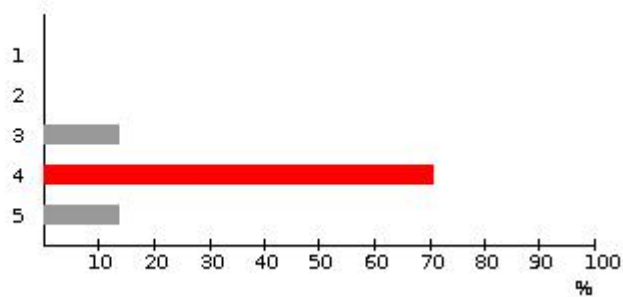
Are the examination problems too difficult? Scale: 1 = very easy ... 5 = very difficult



answer choice	1	2	3	4	5
distribution	0%	28,6%	71,4%	0%	0%
number	(0)	(2)	(5)	(0)	(0)

Average (for numeric-answers): 2,71
 7 has answered of 20 (35%)
 Maximum number of choices: 1

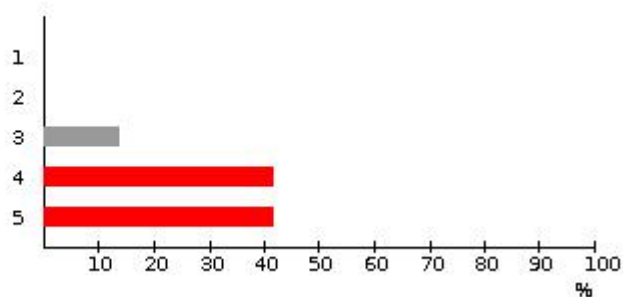
What is your overall opinion on the lectures? Scale: 1 = very bad, 2 = bad, 3 = acceptable, 4 = good, 5 = very good



answer choice	1	2	3	4	5
distribution	0%	0%	14,3%	71,4%	14,3%
number	(0)	(0)	(1)	(5)	(1)

Average (for numeric-answers): 4
 7 has answered of 20 (35%)
 Maximum number of choices: 1

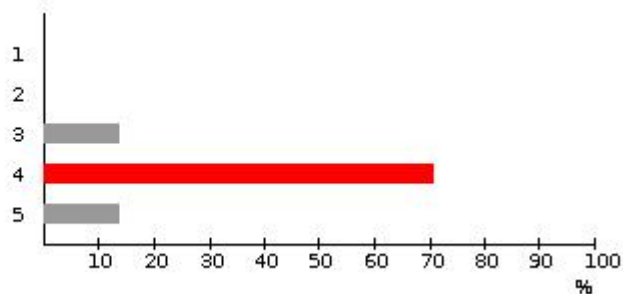
What is your overall opinion on the exercises/labs? Scale: 1 = very bad, 2 = bad, 3 = acceptable, 4 = good, 5 = very good



answer choice	1	2	3	4	5
distribution	0%	0%	14,3%	42,9%	42,9%
number	(0)	(0)	(1)	(3)	(3)

Average (for numeric-answers): 4,29
 7 has answered of 20 (35%)
 Maximum number of choices: 1

What is your overall grade for the course as a whole? Scale: 1 = very bad, 2 = bad, 3 = acceptable, 4 = good, 5 = very good



answer choice	1	2	3	4	5
distribution	0%	0%	14,3%	71,4%	14,3%
number	(0)	(0)	(1)	(5)	(1)

Average (for numeric-answers): 4
 7 has answered of 20 (35%)
 Maximum number of choices: 1

What in this course is good?

5 has answered of 20 (25%)

Comment:

- It is good to have computations in the lab-part of the course, and focus more on theory and general knowledge in the lectures.
 - Labs as they really help me to better understand the lectures/course literature.
 - Yes
 - The labs were good, they gave a better understanding of the different topics in the course.
 - Loved this course, Thank you. The teacher was devoted to answer all our questions even after class hours. The Labs are interesting and fun and help the understanding of the course.
-

What in this course **is not** good and should be changed/improved next year?

5 has answered of 20 (25%)

Comment:

- It would be more fun with better interactivity during the lectures. The class was sufficiently small for that to be possible and give a better learning environment.
 - The order of topics treated in the lectures was a bit inconsistent. Hence for someone with no background knowledge in GNSS, was hard to understand the topics at the start, as some elements required for comprehension were treated later.
 - Number of reports that are all due at once. The last part of the class, we have about 3 lab reports all due on the same day
 - The peer review process felt too extensive.
 - Lab 3 was poorly executed. We didn't had a clue about the measurement instruments and it was more or less "press this button and then this one".
-

Other suggestions for improving the course in the future

3 has answered of 20 (15%)

Comment:

- Keep the structure and perhaps add more interaction during lectures.
- I would have liked to have more example questions to work with during the course.
- If a smartphone comes out with a chip set that actually offers the observation file, I would love to do a lab with that.